

# Akamai EdgeSuite® NetStorage

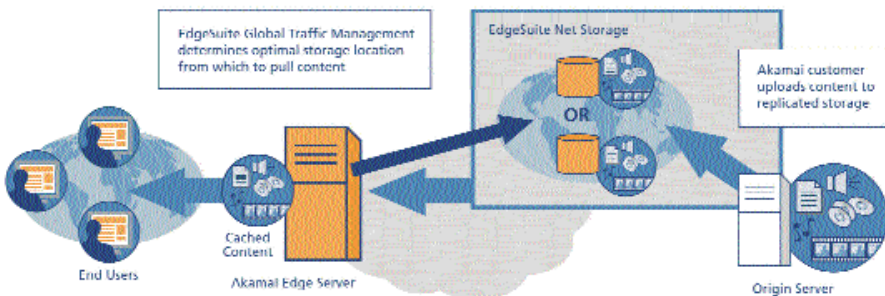
In conducting business on the Web, one of your main goals is to be able to offer the most compelling end-user experience possible to your prospective customer. This can be achieved by quickly and reliably delivering rich media files. However, storing and maintaining a large collection of on-demand files, including electronic images, streaming media files, software, documents, and other digital objects is both technically challenging and prohibitively expensive. It requires a significant investment in racks of redundant servers as well as constant upkeep, including the management of administrative details.

EdgeSuite NetStorage is a secure, outsourced service that eases the costs and hassles associated with content storage. NetStorage consists of multiple terabytes of storage capacity, geographical replication, a massively scalable architecture, and proprietary mapping and routing technology. By using this fault-tolerant storage service, you can make your rich media content available to users on demand, anytime and anywhere.

## How Akamai NetStorage Works

To use EdgeSuite NetStorage, Akamai customers simply upload their content to a designated directory. As soon as the upload is complete, NetStorage replicates the content to ensure availability, placing additional copies of your files at two of Akamai's many worldwide storage centers. These delivery services make use of the Akamai Platform, a massive, distributed global network of servers that work together to intelligently place content close to Web users. Then, EdgeSuite Global Traffic Management determines the optimal storage location (storage center or edge server) from which to pull fresh content. Below is a diagram of how EdgeSuite NetStorage delivers content over the Akamai Platform.

With EdgeSuite NetStorage, your content is delivered quickly and efficiently, reaching each end user browser with better performance and reliability.



## Benefits To Your Business

### Performance

EdgeSuite NetStorage ensures fast transfer of content to Akamai edge servers, first by replicating content to multiple locations, and then by selecting the optimal location from which to retrieve content. Replication brings content closer to the edge. At the same time, the edge servers are directed to the best NetStorage server for fast content retrieval. This approach provides a significant improvement over content retrieval from a single origin site.

### Scalability

By delivering multiple terabytes of storage capacity on a simple, pay-as-you-go basis, NetStorage offers scalability with customers' growing storage needs. In addition, mirroring content to multiple locations around the Internet ensures effective scaling with the geographic diversity of the Web site's user base.

### High Availability

Redundancy and fault tolerance are built into every component of NetStorage: redundant server and network configurations with automatic failover, connectivity to multiple ISPs, high-availability storage hardware, content mirrored to multiple locations, and traffic management. As a result, customer content is always available.

### Intelligent Routing

Intelligent routing decisions are based upon constant monitoring and analysis of network performance, congestion, and server load. This multi-level use of Akamai's routing technology further increases quality and reduces buffering time for a reliable, high-quality end-user experience.

### Data Mirroring

Uploaded content is replicated across multiple Akamai storage centers in different locations and within different networks. This ensures fault tolerance for both high performance and high reliability. Content is replicated immediately after file upload to ensure consistency across servers. Upon deletion, it is automatically purged from all storage centers.

### Redundant Multi-Terabyte Hardware Architecture

EdgeSuite NetStorage is built by layering Akamai's unique replication technology and global traffic management services on top of best-of-breed core storage. The result is a scalable, high-performance, and highly available storage service.

## About Akamai

Akamai® is the leading global service provider for accelerating content and business processes online. Thousands of organizations have formed trusted relationships with Akamai, improving their revenue and reducing costs by maximizing the performance of their online businesses. Leveraging the Akamai EdgePlatform, these organizations gain business advantage today, and have the foundation for the emerging Web solutions of tomorrow. Akamai is "The Trusted Choice for Online Business." For more information, visit [www.akamai.com](http://www.akamai.com).



**Akamai Technologies, Inc.**  
U.S. Headquarters  
8 Cambridge Center, Cambridge, MA 02142  
Tel 617.444.3000  
Fax 617.444.3001  
U.S. toll-free 877.4AKAMAI / (877.425.2624)  
[www.akamai.com](http://www.akamai.com)

© 2006 Akamai Technologies, Inc. All Rights Reserved. Reproduction in whole or in part in any form or medium without express written permission is prohibited. Akamai, the Akamai wave logo, EdgeSuite, and EdgeComputing are registered trademarks. Other trademarks contained herein are the property of their respective owners. Akamai believes that the information in this publication is accurate as of its publication date; such information is subject to change without notice.

AKAMFS-NS-1106