



Protection of Personal and Sensitive Data in Akamai CDN and Security Services

Lukasz Orzechowski, Senior Technical PgM, Akamai InfoSec



—• Agenda

1

Introduction

2

Types of Data

3

Processing Locations

4

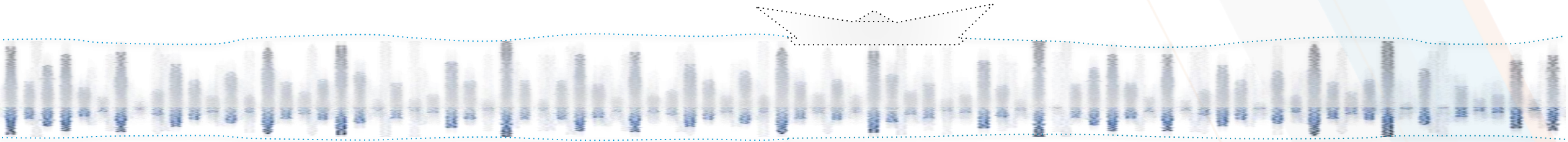
Access Control

5

Privacy Laws

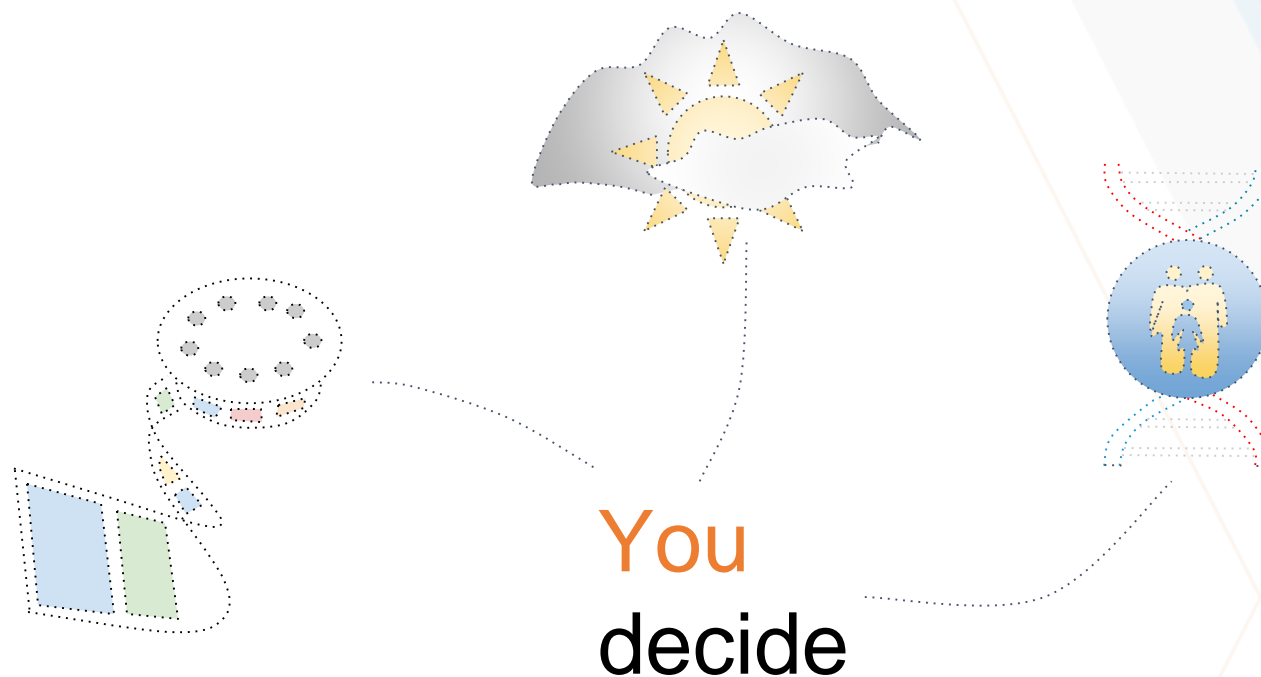
○ How Akamai operates

Akamai acts as a conduit



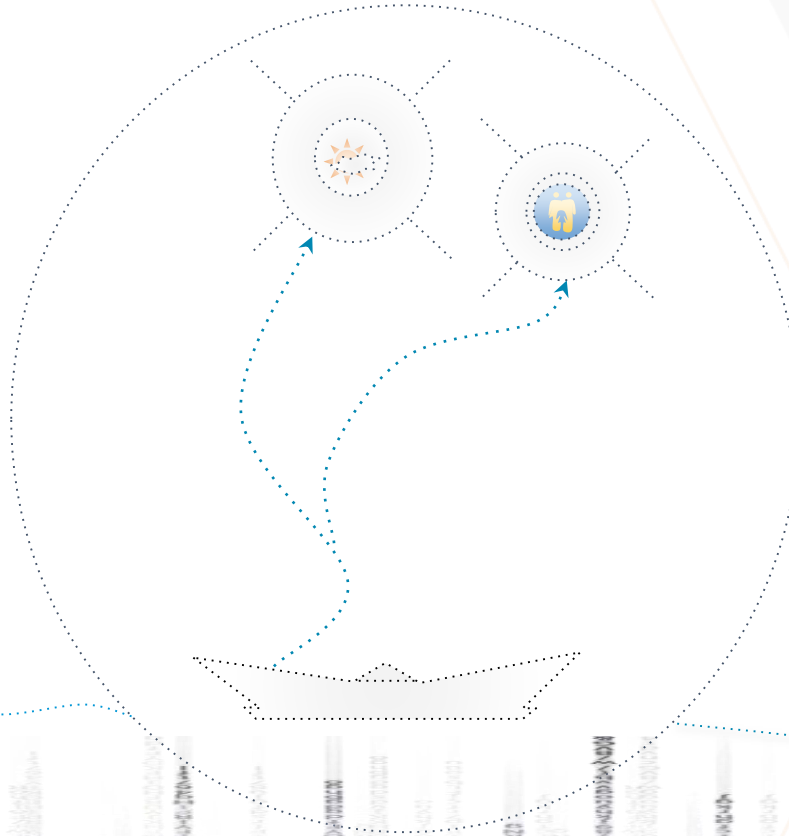
Between you and your end users

○ You can send any type of data through Akamai



○ Purpose of the presentation

This deck will help you
navigate current law landscape,
understand what data Akamai
processes and how this data
is processed & protected



• Types of Data

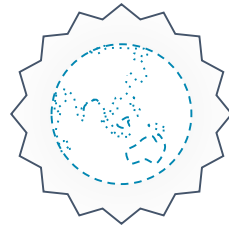


Types of Data processed by Akamai

Data that flows through Akamai platform



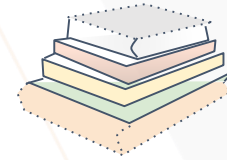
Data about you as our customer



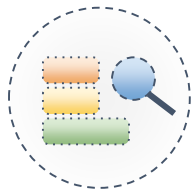
Data generated by Akamai



Cache



Secrets



Each data category will be further discussed on the following slides

○ Data that flows through Akamai Platform



Akamai respects your privacy and will act as a mere conduit for data in customer content. The data will be processed exactly in the way you have configured, without inspecting it for sensitive or private information.



We encourage you to implement a data classification mechanism and select Akamai services adequate to the type of data you are sending.

It can be anything



Akamai must inspect requests to process them in the way you have ordered us to

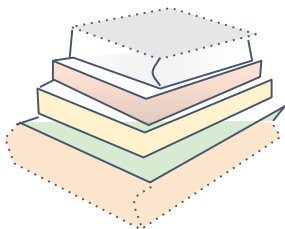


Akamai must process IP addresses



IP addresses are important as they are considered to be personal data by certain privacy laws. [More about it later.](#)

Cache



You have full control on what will be cached by Akamai

Only data selected by the customer is **cached to be shared**. That's why you should not configure the services to cache sensitive or personal information (Akamai's PS team can help you with the configuration).

Elements cached will be served by Akamai which offloads your infrastructure



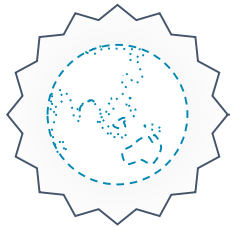
Cache integrity is ensured by checksums. Cache is not encrypted at rest for performance reasons



Cache has transient nature and an expiration date. As a temporary copy, it is not backed up.

○ Data about you as a customer

Personal information



business address
contact names
telephone numbers
title
Luna / API credentials
email address

Regular information

services configurations
runbook rules
property information
your certificates
notification preferences

○ Data generated by Akamai



End users

IP addresses
Geo location
Page activity and URLs
Telemetry data



Bots

Bot signatures
Behavioral patterns
Bot activity
Attack patterns



Administrative

Authgate grants
Grants usage
Systems monitoring
Secret keys management
...



Internet

IP reputation
Optimal routing
Traffic congestions
Emerging threats
...

○ What about secrets?

Certificates and Keys



Used to encrypt connections in the Standard and Enhanced TLS CDN.
Stored and distributed using Akamai Key Management Infrastructure.

Protection

Physical protection

Encryption at rest

Quarterly pentests

Encryption in transit

Dedicated memory

Port hardening

NOCC monitoring

Access control

No PII on disc

Audits every 20 minutes

Restricted inbound traffic

• Processing Locations



○ Akamai is a global platform

300 000+ servers

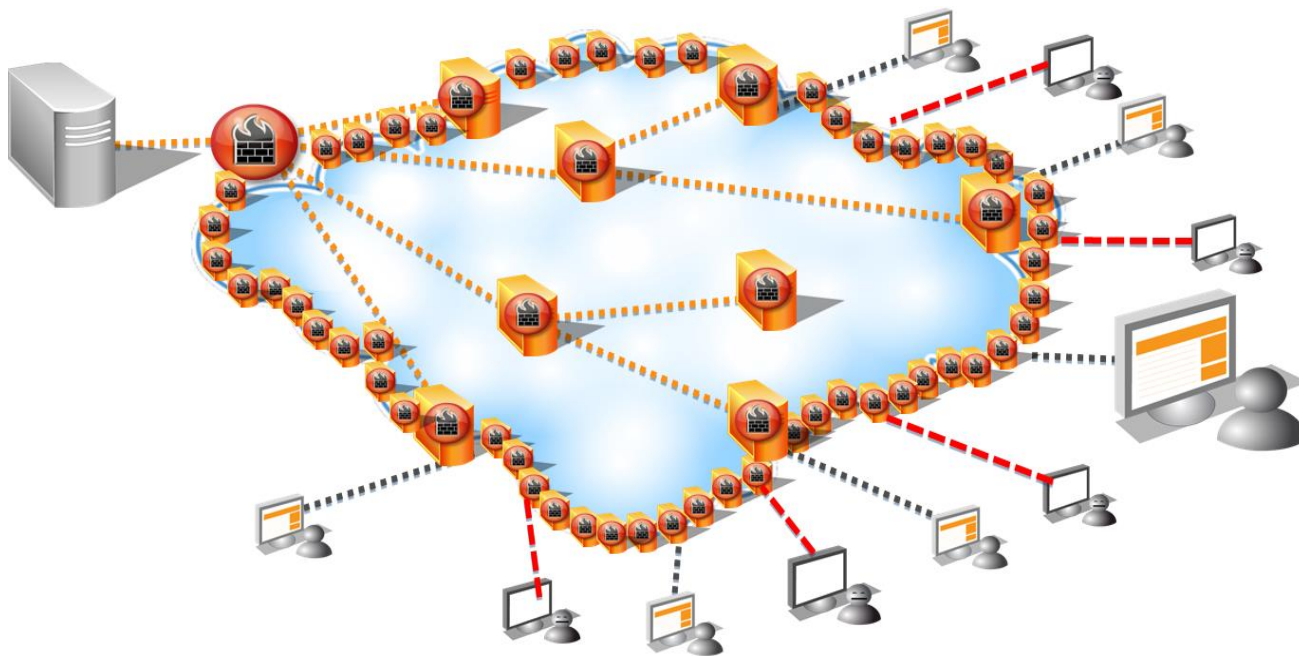
2 300+ datacenters

130+ countries

1600+ networks



- Servers are close to the end users



○ Everything is processed globally*

Data that flows through the Akamai platform



Processed globally by the edge servers that are the most optimal for the end user.

Edge server inspects end user requests and then processes them as defined by the customer.

IP data and geolocation is used to determine optimal servers and routing

○ Everything is processed globally*

Data that flows through the Akamai platform



Processed globally by the edge servers that are the most optimal for the end user.

Edge server inspects end user requests and then processes them as defined by the customer.

IP data and geolocation is used to determine optimal servers and routing

Data about you as our customer



Personal information is stored in Luna & Salesforce cloud and processed by Akamai support centers globally

Regular information (configuration) is distributed globally and processed by servers delivering services.

○ Everything is processed globally*

Data that flows through the Akamai platform



Processed globally by the edge servers that are the most optimal for the end user.

Edge server inspects end user requests and then processes them as defined by the customer.

IP data and geolocation is used to determine optimal servers and routing

Data about you as our customer



Personal information is stored in Luna & Salesforce cloud and processed by Akamai support centers globally

Regular information (configuration) is distributed globally and processed by servers delivering services.

Data generated by Akamai



Generated globally and processed globally.

Usage: services delivery, support, billing, audit trail, diagnostic, services improvement...

Everything is processed globally*

Data that flows through the Akamai platform



Processed globally by the edge servers that are the most optimal for the end user.

Edge server inspects end user requests and then processes them as defined by the customer.

IP data and geolocation is used to determine optimal servers and routing

Data about you as our customer



Personal information is stored in Luna & Salesforce cloud and processed by Akamai support centers globally

Regular information (configuration) is distributed globally and processed by servers delivering services.

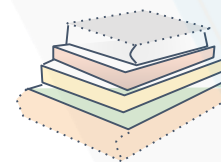
Data generated by Akamai



Generated globally and processed globally.

Usage: services delivery, support, billing, audit trail, diagnostic, services improvement...

Cache



Processed and stored globally.

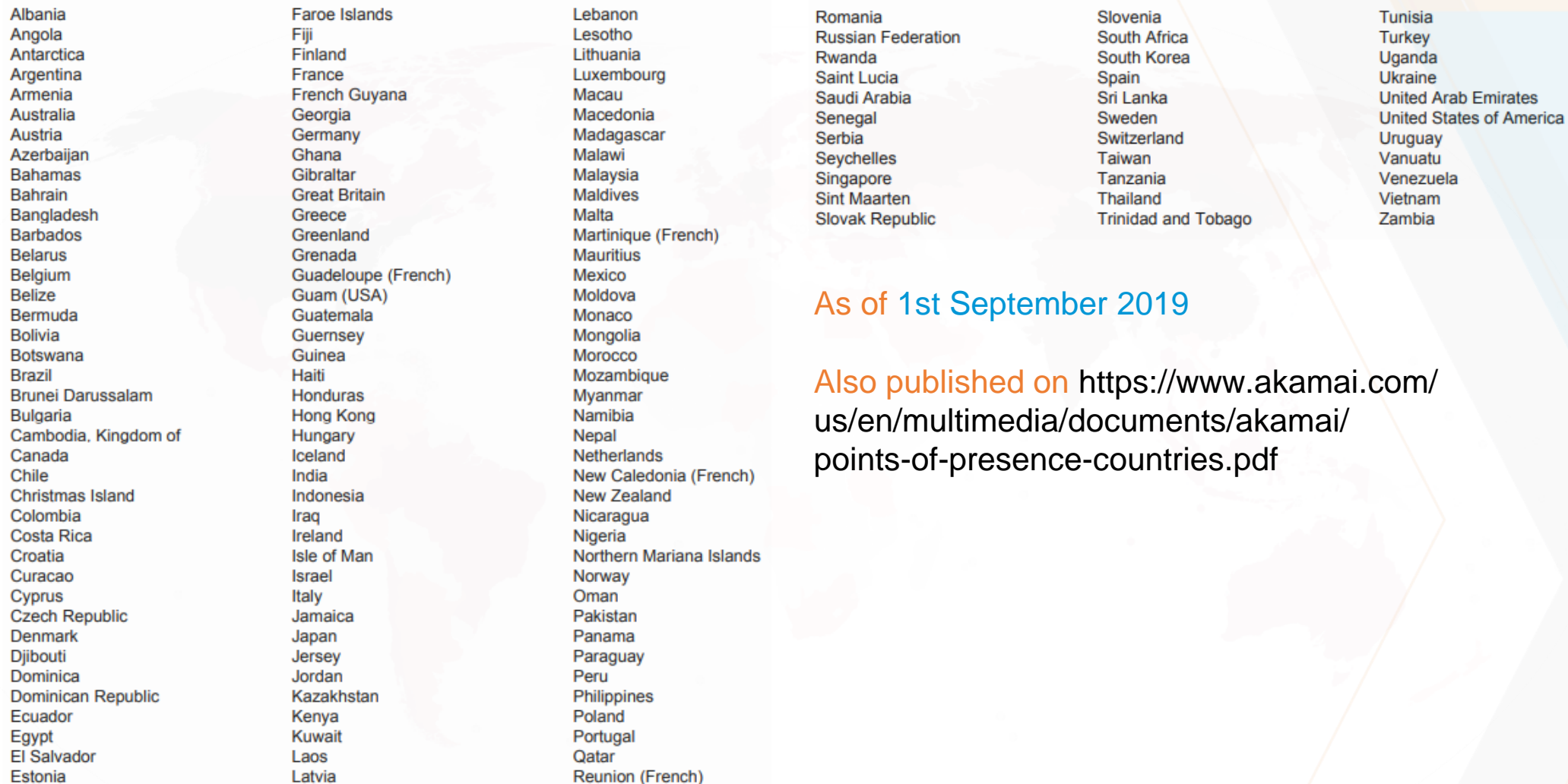
Secrets



Managed globally by secure Key Management Infrastructure.

Processed globally by Secure CDN Edge servers

Can you deliver us a list of countries?



Albania	Faroe Islands	Lebanon	Romania	Slovenia	Tunisia
Angola	Fiji	Lesotho	Russian Federation	South Africa	Turkey
Antarctica	Finland	Lithuania	Rwanda	South Korea	Uganda
Argentina	France	Luxembourg	Saint Lucia	Spain	Ukraine
Armenia	French Guyana	Macau	Saudi Arabia	Sri Lanka	United Arab Emirates
Australia	Georgia	Macedonia	Senegal	Sweden	United States of America
Austria	Germany	Madagascar	Serbia	Switzerland	Uruguay
Azerbaijan	Ghana	Malawi	Seychelles	Taiwan	Vanuatu
Bahamas	Gibraltar	Malaysia	Singapore	Tanzania	Venezuela
Bahrain	Great Britain	Maldives	Sint Maarten	Thailand	Vietnam
Bangladesh	Greece	Malta	Slovak Republic	Trinidad and Tobago	Zambia
Barbados	Greenland	Martinique (French)			
Belarus	Grenada	Mauritius			
Belgium	Guadeloupe (French)	Mexico			
Belize	Guam (USA)	Moldova			
Bermuda	Guatemala	Monaco			
Bolivia	Guernsey	Mongolia			
Botswana	Guinea	Morocco			
Brazil	Haiti	Mozambique			
Brunei Darussalam	Honduras	Myanmar			
Bulgaria	Hong Kong	Namibia			
Cambodia, Kingdom of	Hungary	Nepal			
Canada	Iceland	Netherlands			
Chile	India	New Caledonia (French)			
Christmas Island	Indonesia	New Zealand			
Colombia	Iraq	Nicaragua			
Costa Rica	Ireland	Nigeria			
Croatia	Isle of Man	Northern Mariana Islands			
Curacao	Israel	Norway			
Cyprus	Italy	Oman			
Czech Republic	Jamaica	Pakistan			
Denmark	Japan	Panama			
Djibouti	Jersey	Paraguay			
Dominica	Jordan	Peru			
Dominican Republic	Kazakhstan	Philippines			
Ecuador	Kenya	Poland			
Egypt	Kuwait	Portugal			
El Salvador	Laos	Qatar			
Estonia	Latvia	Reunion (French)			

As of 1st September 2019

Also published on <https://www.akamai.com/us/en/multimedia/documents/akamai/points-of-presence-countries.pdf>

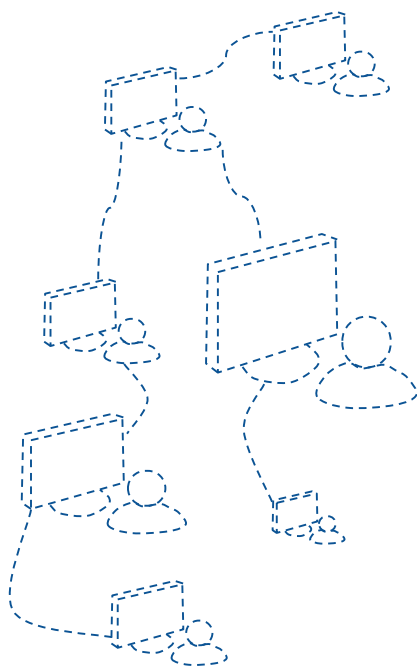
* Please note that China and Russia CDNs are offered as separate products and servers in these countries are not used in the regular CDN

• Access Control



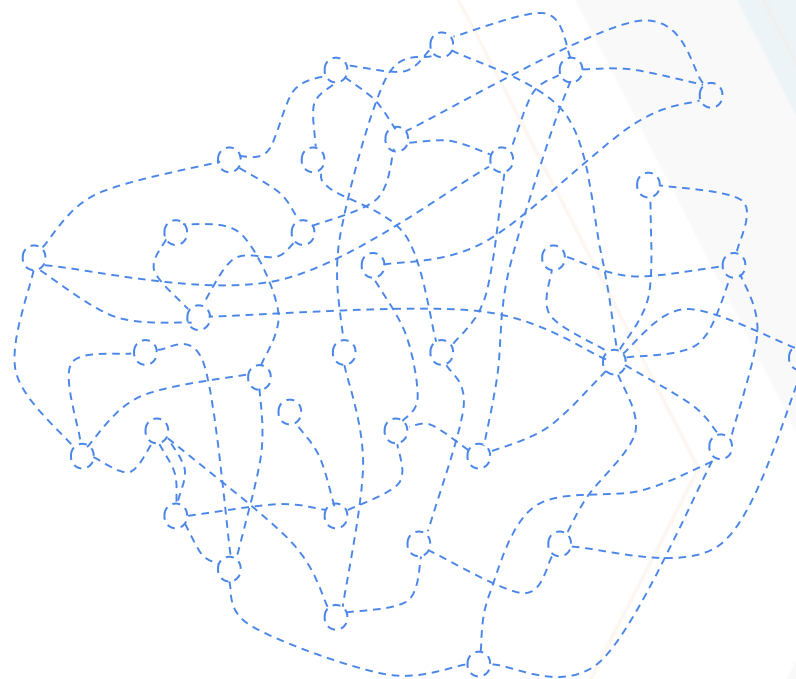
○ Akamai networks separation

Corporate Network

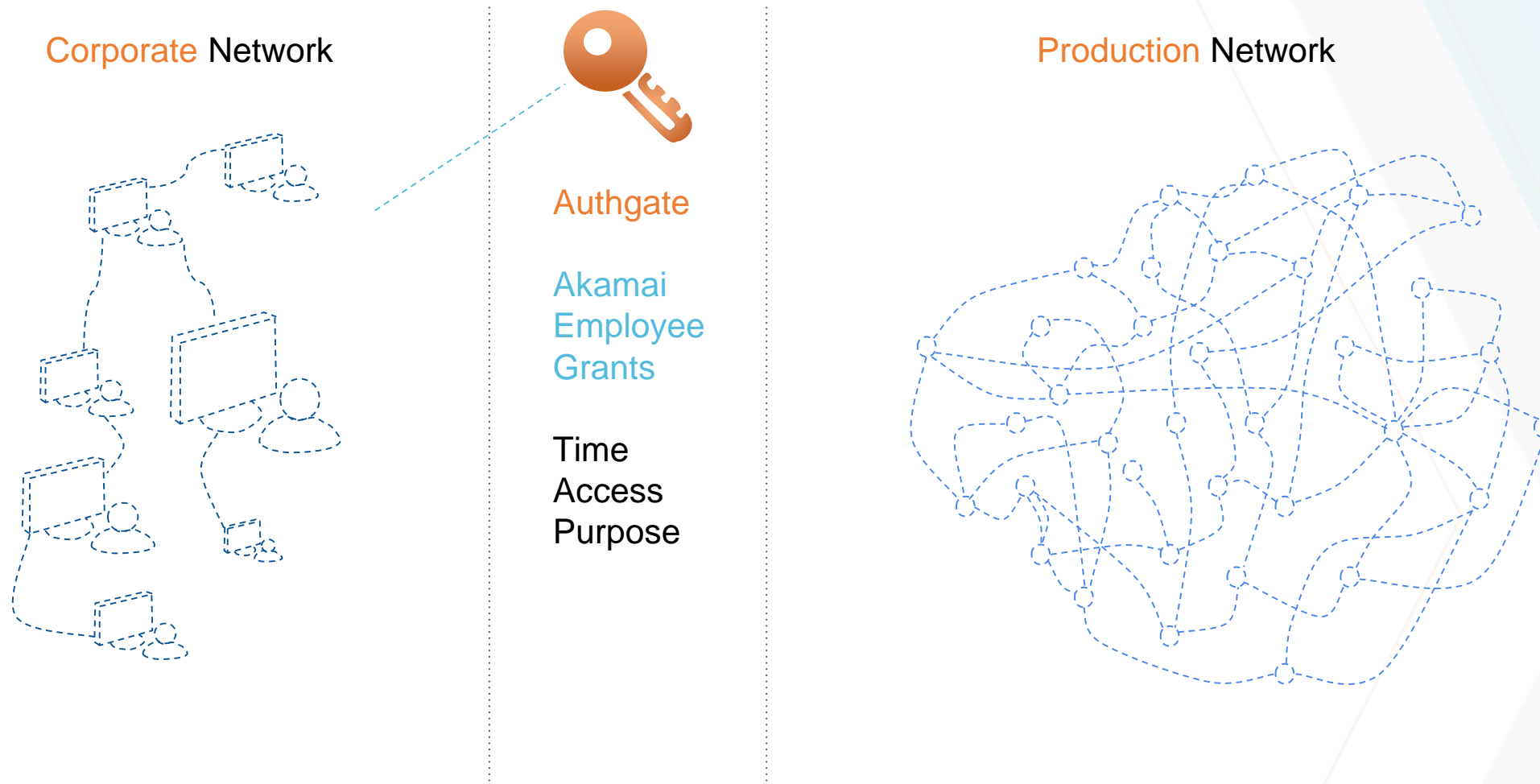


Authgate

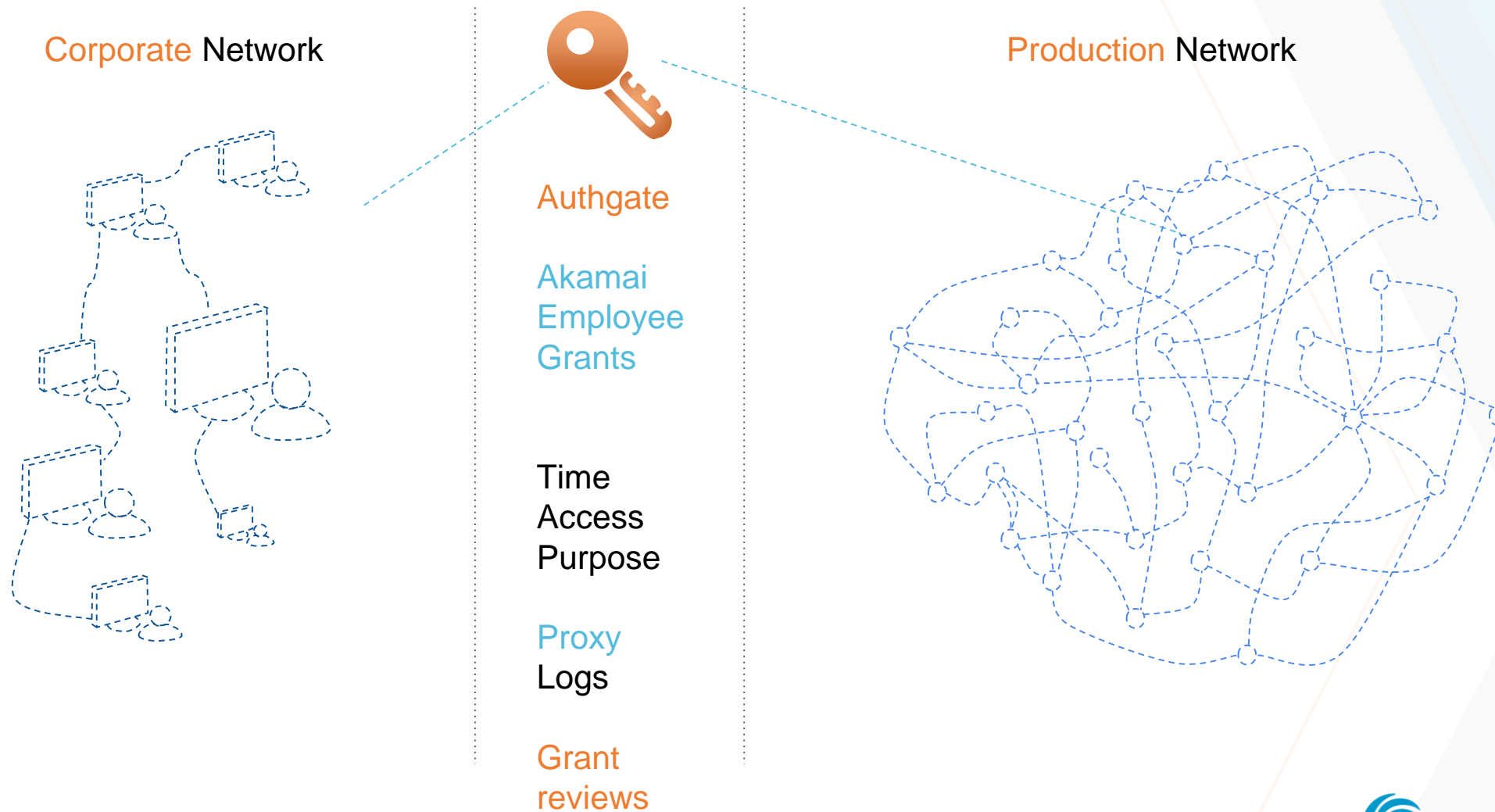
Production Network



○ Akamai networks separation



○ Akamai networks separation



Authserver

Authenticates users
using 2048 bit RSA key

Grants users indirect access
to production machines

Sends shell commands
to Authgate gateway

Grants are time limited and
provided on a must-basis

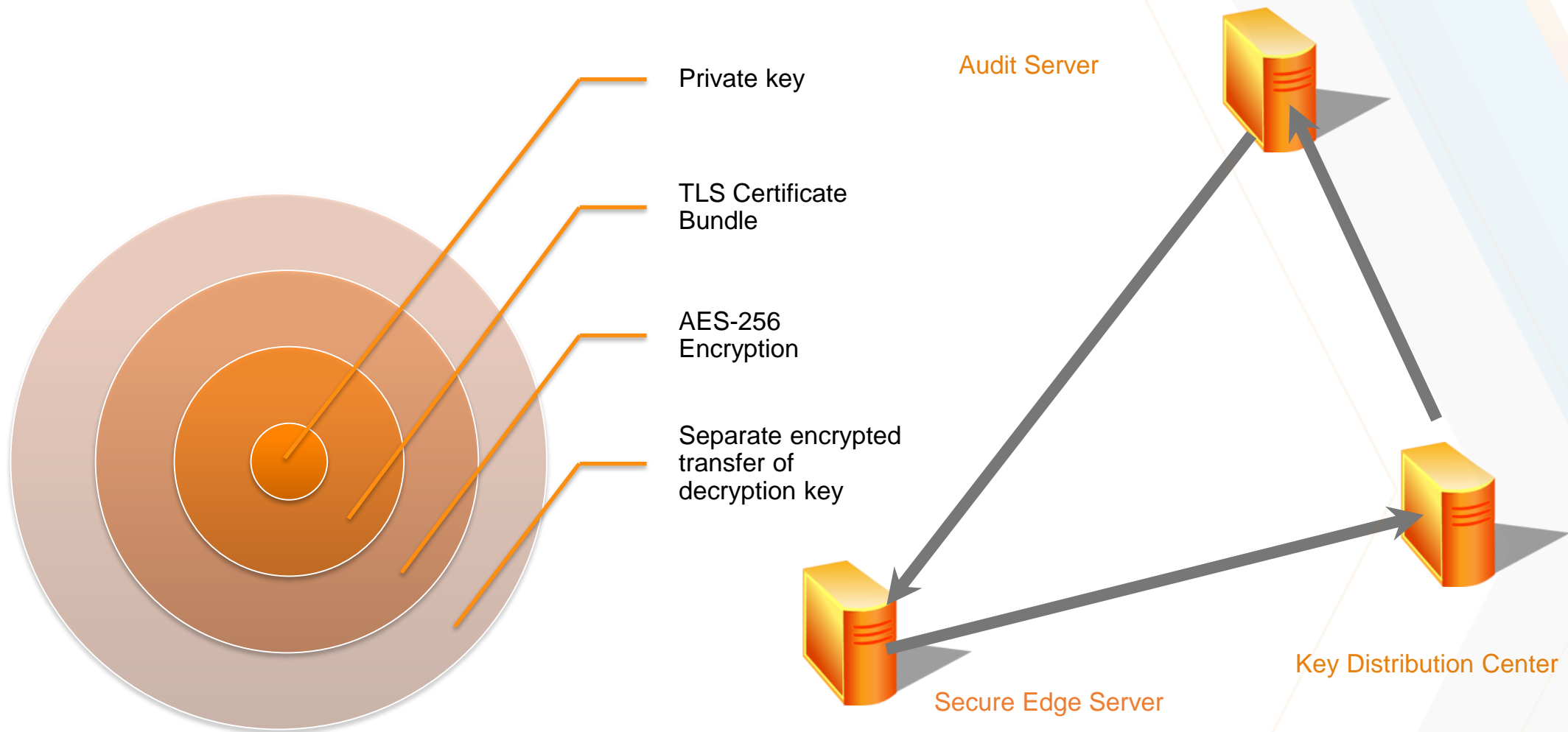
Supports MFA

Delivers UI
to manage grants and keys

Generates and stores logs



KMI and Secrets



○ Hardened servers

Port hardened

Inbound traffic
only on 443 and 80

No PII
on disk

Secure Memory
allocation



Drop malformed
requests

Dynamic
load balancing

Dedicated
admin channels

Multi-Layered
secret protection

Fully enclosed
secure racks

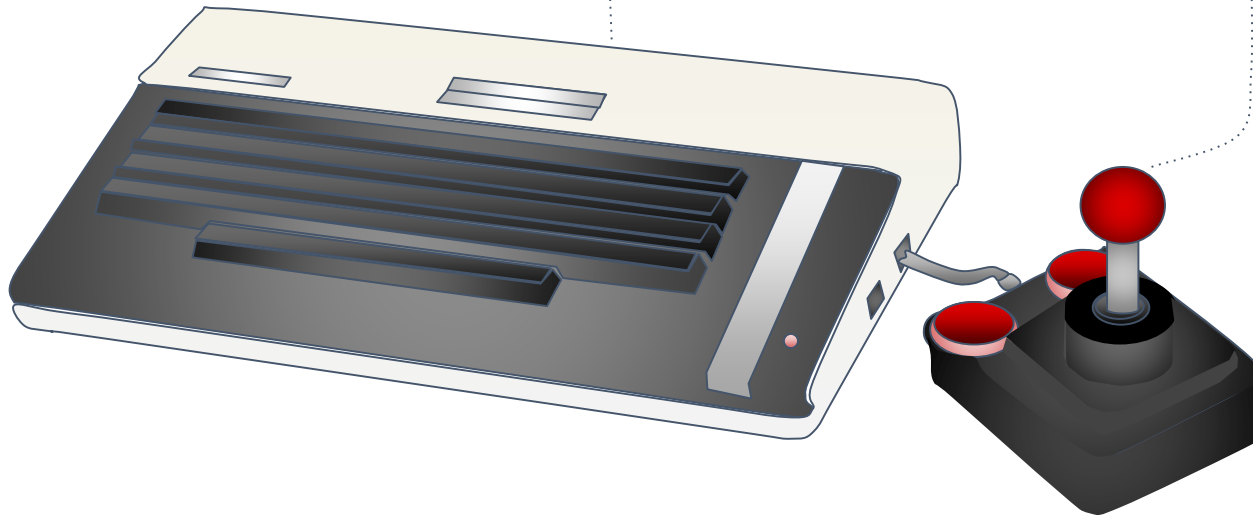
• Privacy Laws



○ Privacy laws define the processing roles

The party that processes
Personal Data on behalf
of the determining party

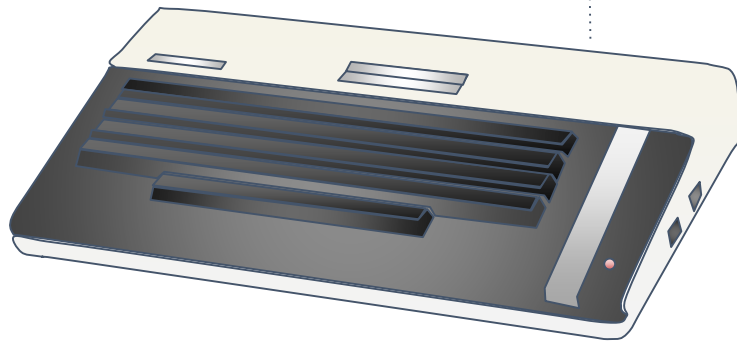
The party who determines
how the Personal Data is
processed



The roles' name vary by country: Data Processor/Controller, Service Provider/Business, Data Intermediare/Organisation...

○ Akamai processing on behalf of the customer

For some Personal Data,
Akamai is processing on behalf of
you as the Akamai customer



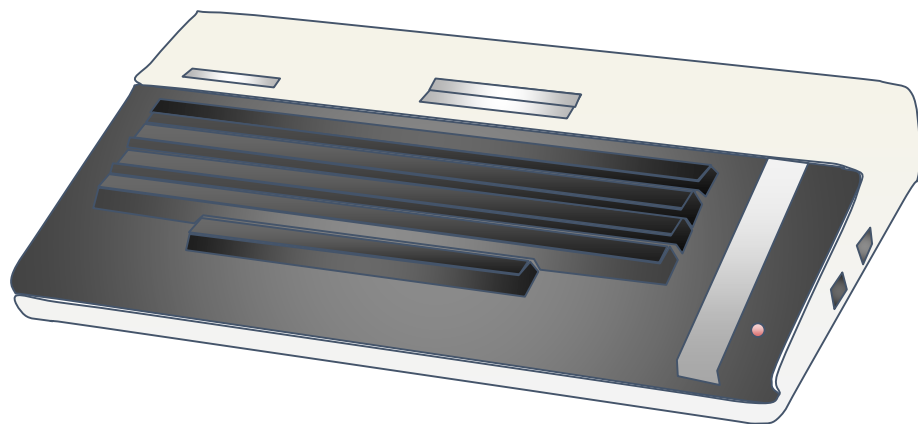
You decide what will be cached
You decide what you will send
You decide what services will be used
and therefore how the data will be
processed

Data that flows through Akamai platform



○ Akamai processing on behalf of the customer

“Personal Data in Customer Content”



Financial or other
transaction information

Login
Credentials

Subscriber name and
contact information

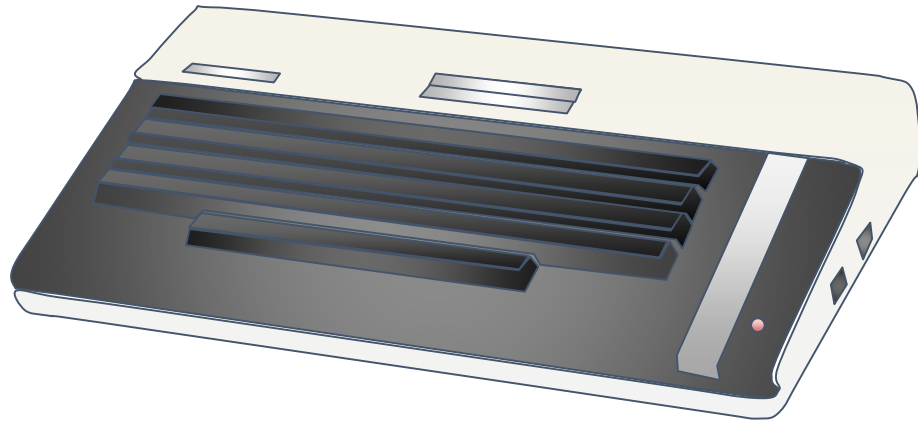
Other information relating to
the individual data subject as
requested or provided by the
customer through the use of
its web property.

Akamai processes Personal Data
exactly as you have told us to process it



○ Akamai processing on behalf of the customer

“Personal Data in Customer Content”



Financial or other
transaction information

Subscriber name and
contact information

Login
Credentials

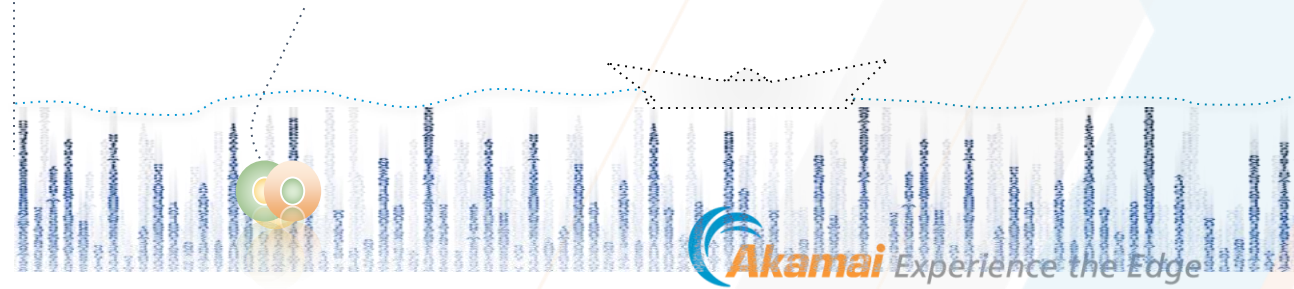
Other information relating to
the individual data subject as
requested or provided by the
customer through the use of
its web property.

You decide

You as Akamai's customer decides how the data is processed and what will be sent through the Akamai platform and, as such, you are responsible for compliance with applicable laws for such processing

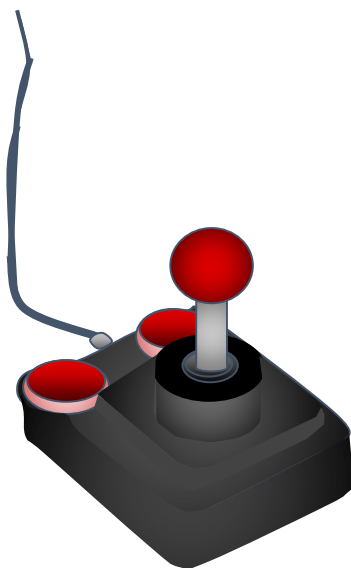
(e.g. appropriate end user notices or consent and having chosen services appropriate for the type of End User Personal Data transiting Akamai's servers.)

Akamai processes Personal Data
exactly as you have told us to process it



○ Akamai determining the purpose

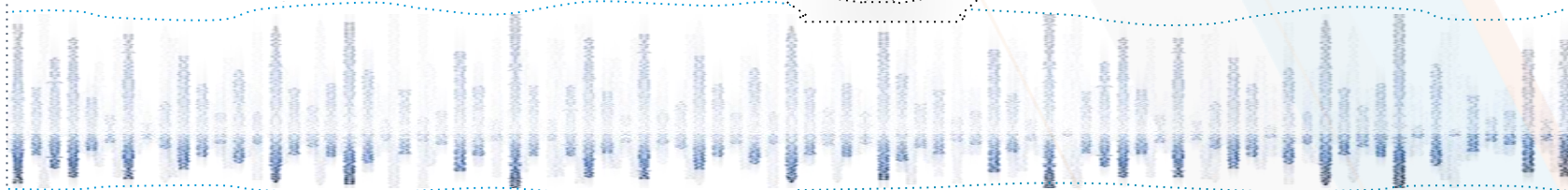
“Logged Personal Data”



For some Personal Data,
Akamai is a Data Controller

Various logged data
generated by Akamai

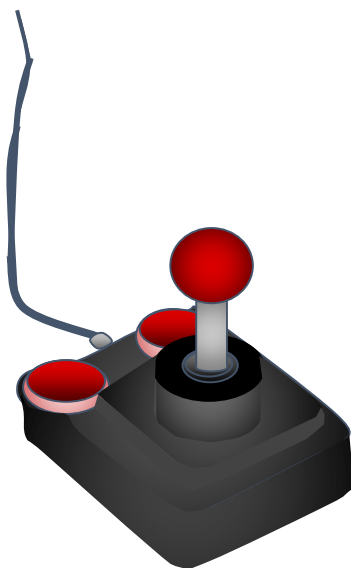
IP addresses
Geo location
Page activity and URLs
Telemetry data



Data about you as our customer

○ Akamai as a Data Controller

“Logged Personal Data”



For some Personal Data,
Akamai is a Data Controller

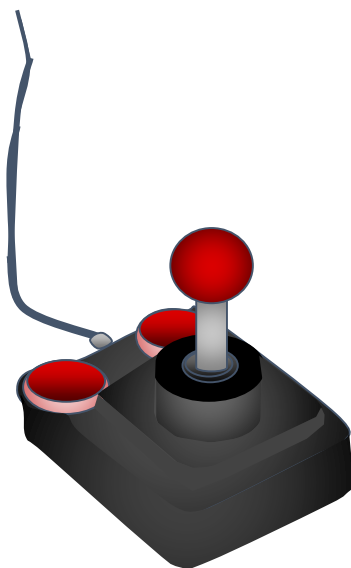
Various logged data
generated by Akamai

IP addresses
Geo location
Page activity and URLs
Telemetry data

Akamai determines the data that must be collected and processed, the purposes of that processing (such as, for example, mapping/routing, threat analysis, service improvement and development, fraud management, billing), and the technical means for conducting the processing (such as development of algorithms, and delivery techniques and systems).

○ Akamai as a Data Controller

“Customer Personal Data”



corporate address

Job title

contact names Business phone numbers

ACC / API credentials

business email address

Data about you as our customer

Akamai collects and processes Customer Personal Data to provide access to and use of services, communications with customers, and to manage customer relations. This data is stored by Akamai in its portal(s) (such as Luna), customer community and developer sites, and in internal business process tools.

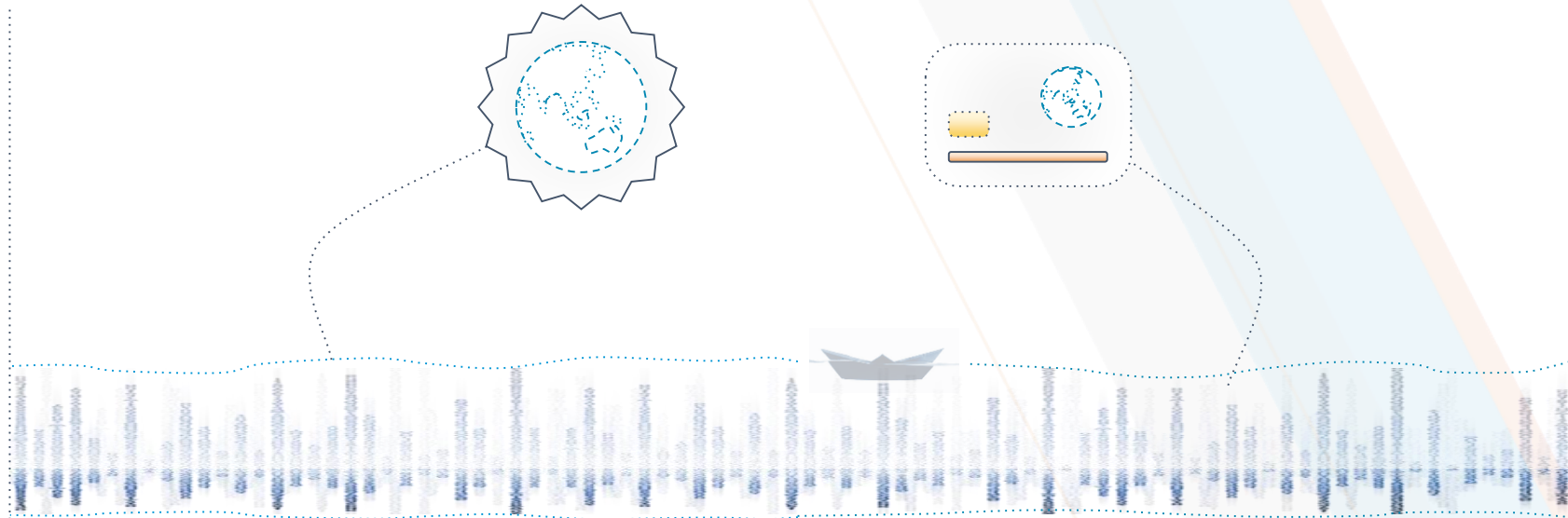


Akamai determines what data it collects from its customers (e.g. business address of the company), the data retention and the purposes such data is used for (Marketing and Relationship Management). Therefore, with respect to Customer Personal Data, Akamai operates as Data Controller.

○ Privacy Laws require a DPA



DPA sets forth the
right and duties
associated
with a processing role



Akamai's processing activities required for providing the service is reflected in the Akamai DPA available at

<https://www.akamai.com/us/en/multimedia/documents/akamai/akamai-data-protection-addendum.pdf>

The Akamai DPA cover the role of Akamai as a content delivery and security service provider. Customer's DPAs require extensive work to adjust them to the Akamai services.

Summary

1

Introduction

2

Types of Data

3

Processing Locations

4

Access Control

5

Privacy Laws

—• Thank You

